

# EBS-Inspector 2.1 - Try It Instructions

Welcome to the EBS-Inspector 2.1 TryIt instructions...10 minutes to your first inspection report!

**PLEASE NOTE:** *If you prefer a 10 minute demo, please contact us (info at end of this document)*

First, please install the app:

**Install on your iPhone or iPad:**

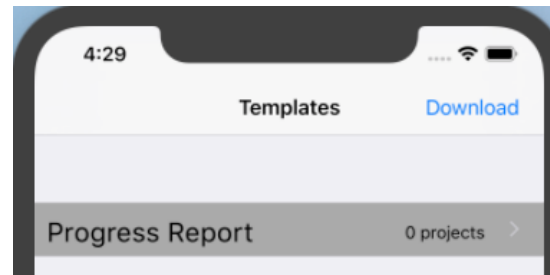


**Then launch the app:**



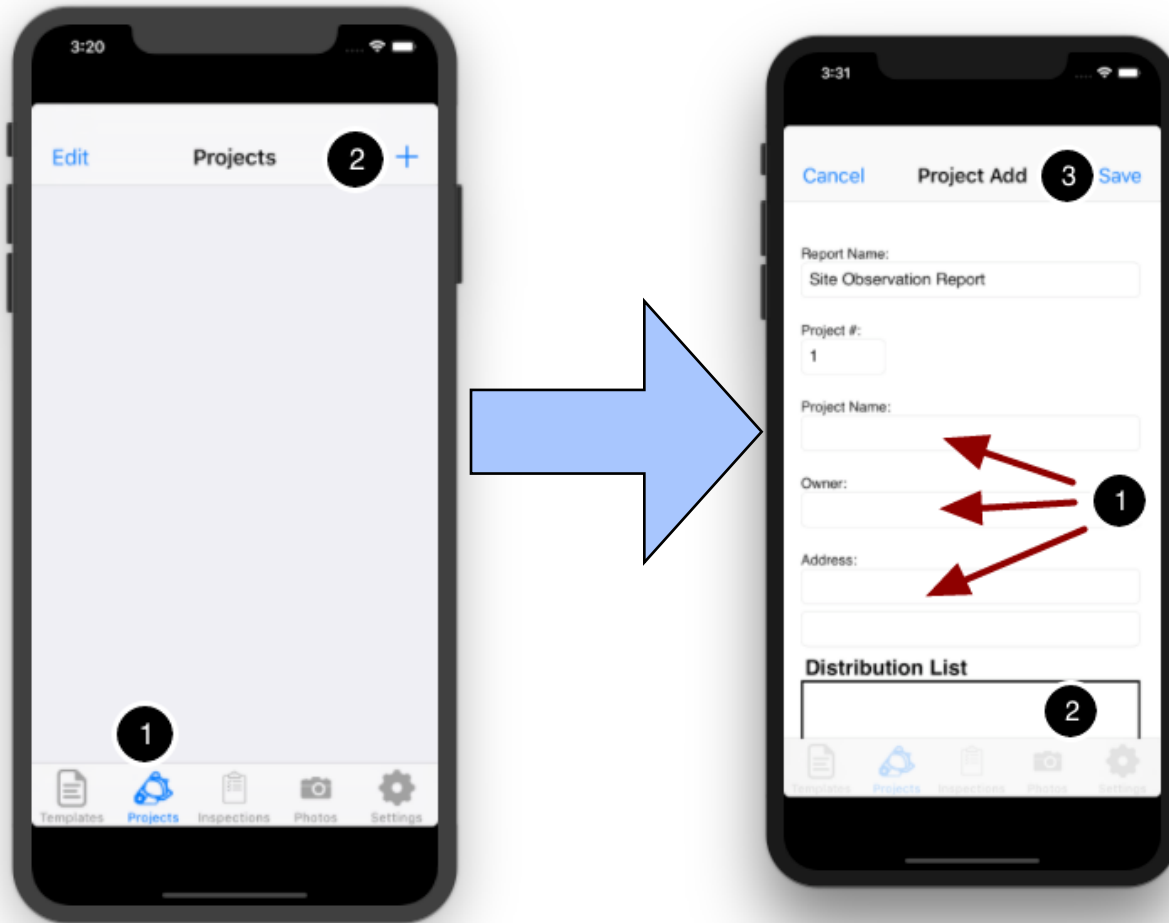
**And download the template**

(Tap Download button at top of Templates tab):



# EBS-Inspector 2.1 - Try It Instructions

## Step #1 - Create a project

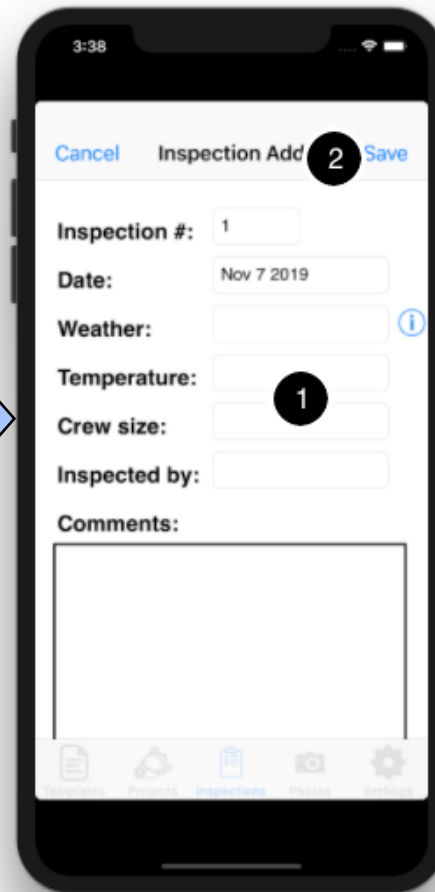
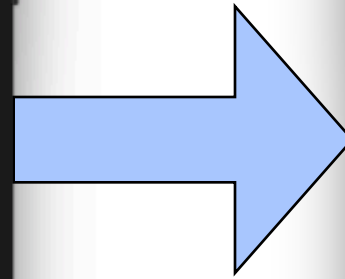
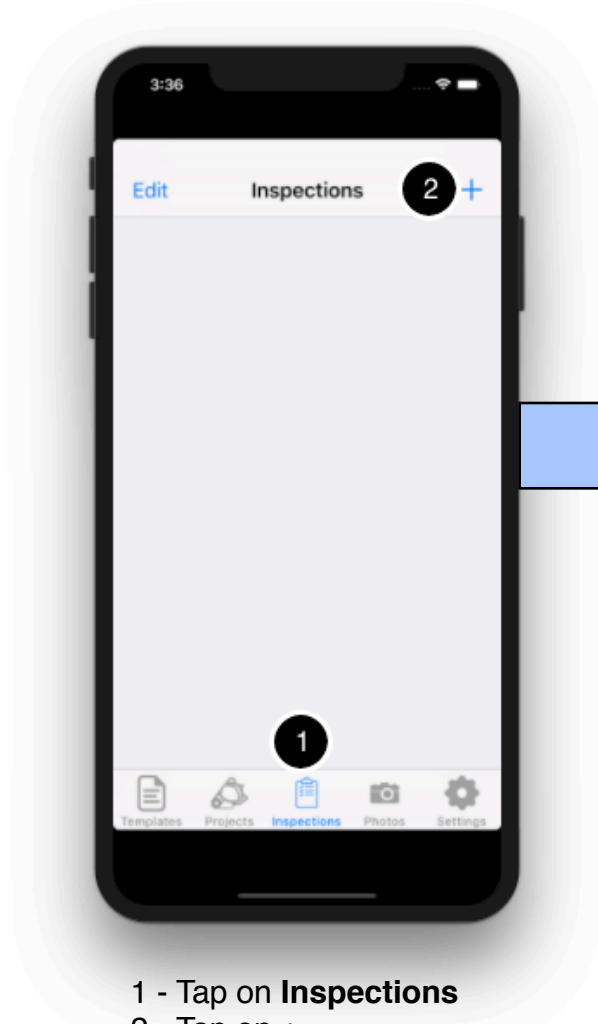


- 1 - Tap on **Projects**
- 2 - Tap on **+**

- 1 - Enter project details.
- 2 - Enter distribution list.
- 3 - Tap **Save**.

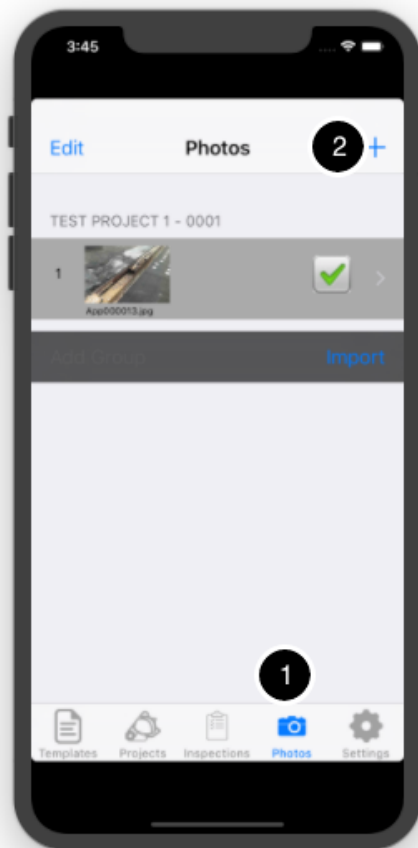
# EBS-Inspector 2.1 - Try It Instructions

## Step #2 - Add an inspection

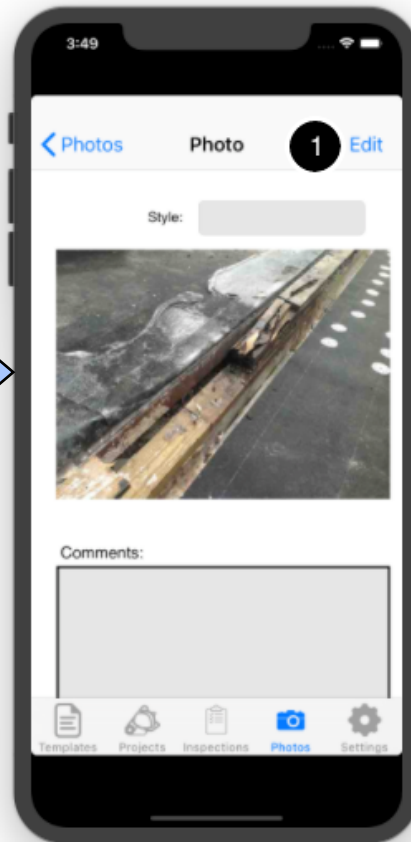


# EBS-Inspector 2.1 - Try It Instructions

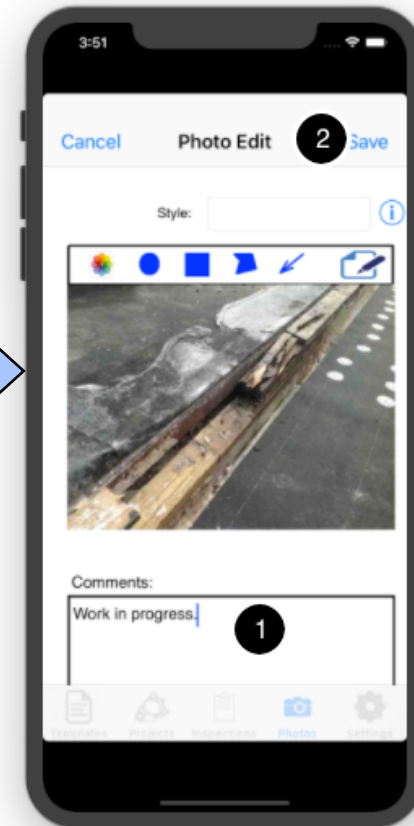
## Step #3 - Add photos



- 1 - Tap on **Photos**.
- 2 - Tap on +
  - Take a photo.
  - Repeat to take several photos.



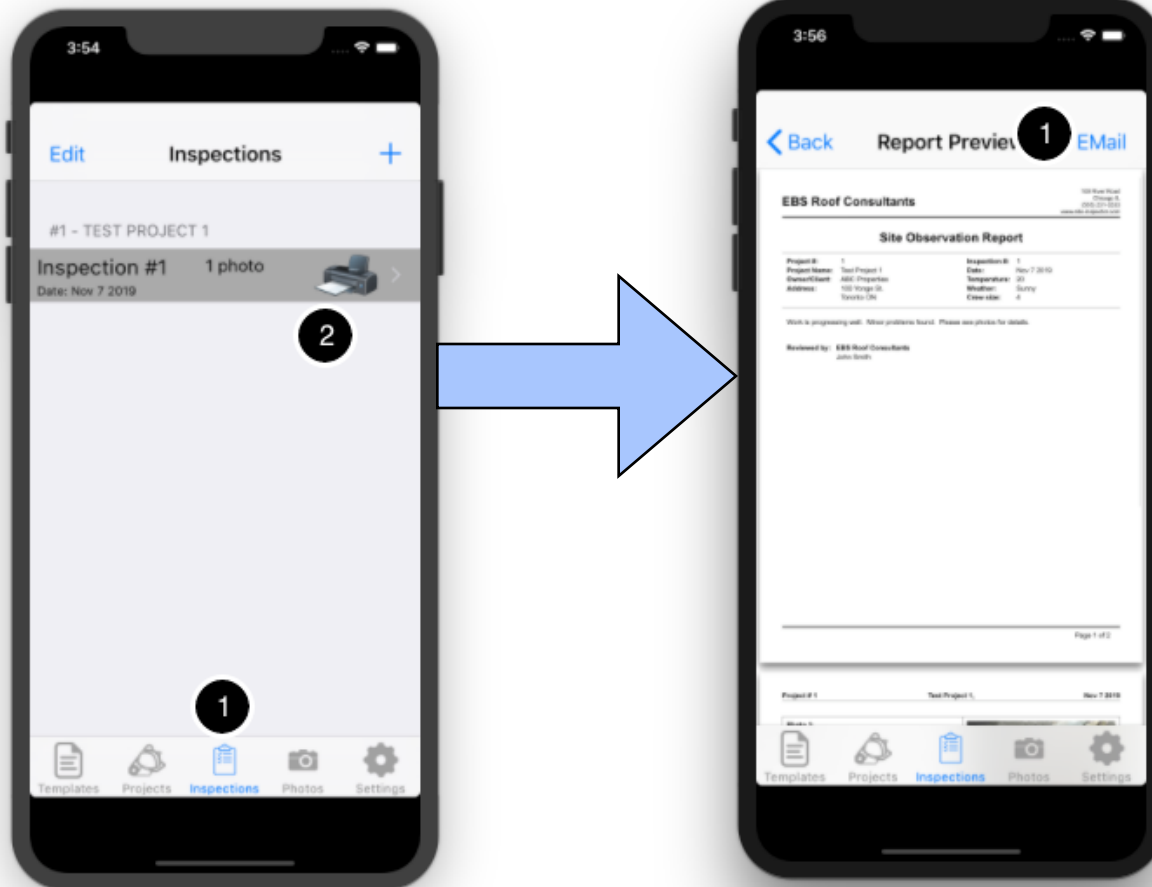
- Tap on a photo (screen to left)
- 1 - Tap **Edit**.



- 1 - Enter Comments.
- 2 - Tap **Save**.

# EBS-Inspector 2.1 - Try It Instructions

## Step #4 - View and send the inspection report



- 1 - Tap on **Inspections**.
- 2 - Tap on printer icon.  
View the report.

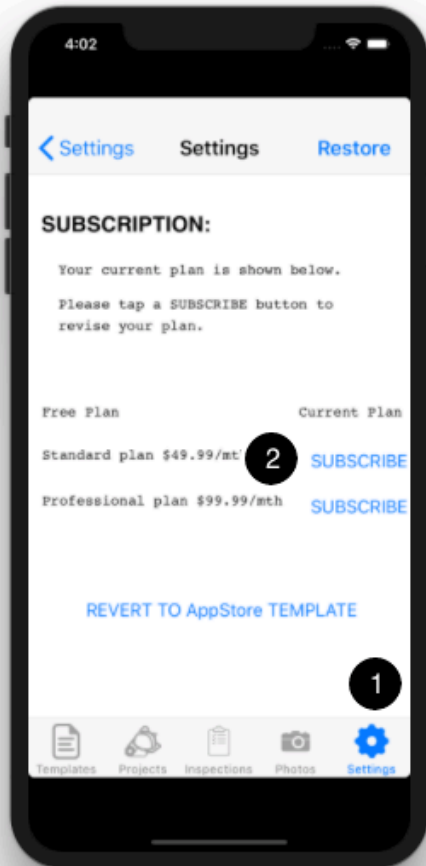
- 1 - Tap the EMail button.
  - Enter an Email address, subject and
  - message.
  - Tap **Send**

# EBS-Inspector 2.1 - Try It Instructions

Congratulations... You now have your first inspection report!

The following instructions will show you how to enhance this report with:

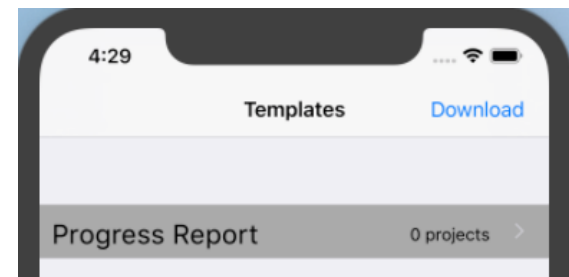
- A site plan.
- Progress markup on the site plan.
- Photo markups.
- Photo locations to the site plan.



These features require a subscription, which will start with a one month free trial. Please go the **Settings** tab, then tap on **Subscriptions**.

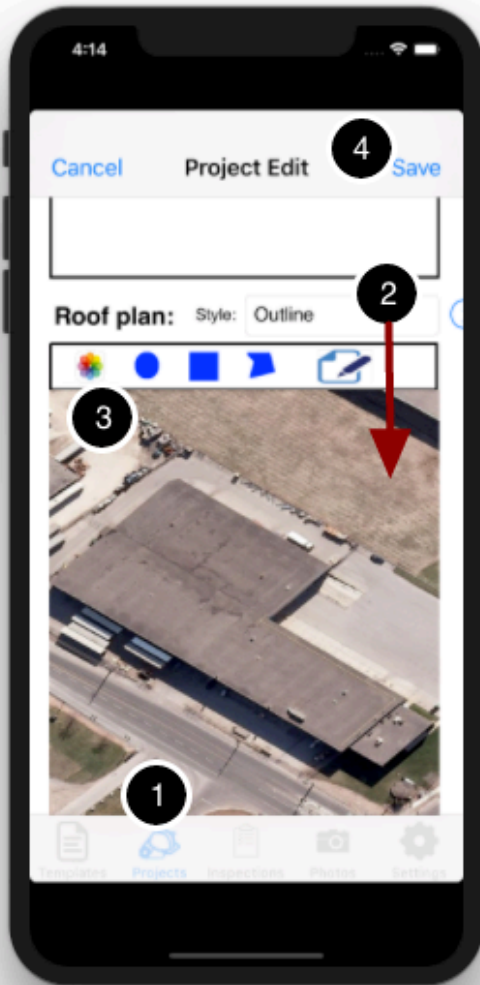
The subscription rates shown will be in your local currency. Tap on the **SUBSCRIBE** button for the Standard plan.

If your subscription is successful, please go to the **Templates** tab and tap on **Download**.



# EBS-Inspector 2.1 - Try It Instructions

## Step #1 - Add a site plan to your project



The site plan must be in your photo album. It can be a Google map image, a drawing or any other image. It must be a JPG file.

- 1 - Tap on the **Projects** tab and tap on a project.
- 2 - Scroll the project form down to Roof plan.
- 3 - Tap the photo album icon. Select an image and tap **Done**.
- 4 - Tap **Save**.

# EBS-Inspector 2.1 - Try It Instructions

## Step #2 - Add progress markup to your inspection



Progress markup is added on the inspection form.

- 1 - Tap on the **Inspections** tab and tap on an inspection.
- 2 - Tap on **Edit**.
- 3 - Scroll the inspection form down to Roof plan.
- 4 - Select the **Completed** style.
- 5 - Tap on the 4th icon to draw a filled polygon.
- 6 - Tap on 3 or more points to create a polygon. Tap on the Green checkbox to finish the polygon.
- 7 - Select the **Current** style and repeat steps 5,6 and 7.
- 8 - Tap Save.

# EBS-Inspector 2.1 - Try It Instructions

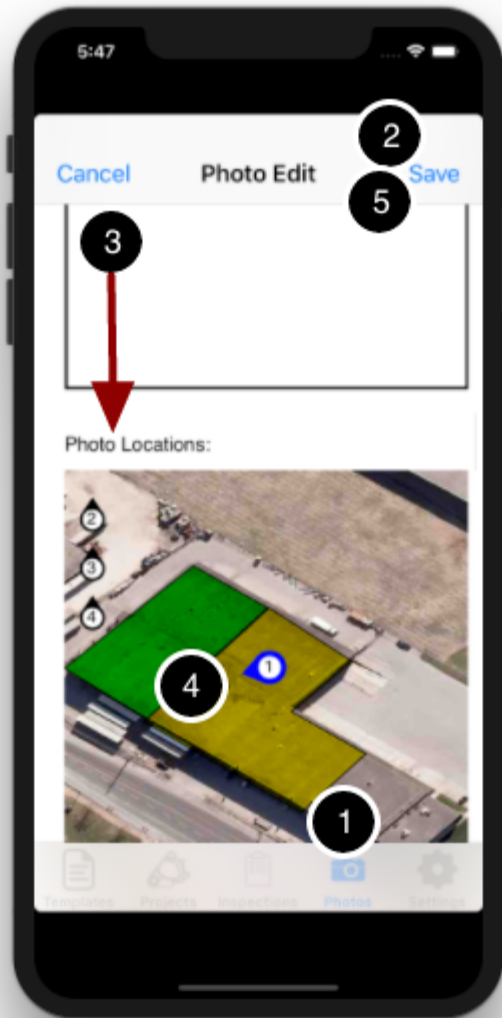
## Step #3 - Add photo markup



- 1 - Tap on the **Photos** tab and tap on a photo..
- 2 - Tap on **Edit**.
- 3 - Tap on one of the drawing tools, then tap on points.
  - Circle - Tap centre and then right edge.
  - Square - Tap top left, top right and bottom right.
  - Polygon - Tap 3 or more points.
  - Arrow - Tap start. Tap end.
- 4 - Tap the green checkmark.
- 5 - Tap **Save**.

# EBS-Inspector 2.1 - Try It Instructions

## Step #4 - Add photo locations



- 1 - Tap on the **Photos** tab and tap on a photo..
- 2 - Tap on **Edit**.
- 3 - Scroll down to the photo locations section.
- 3 - Photo icons are listed on the left. Tap on an icon and drag it onto the roof plan.
- 4 - Set the direction indicator by tapping and moving around the icon. The arrow will follow.
- 5 - Tap **Save** when all location are set.

# EBS-Inspector 2.1 - Try It Instructions

Thank you for taking time to evaluate EBS-Inspector.

Please contact us to learn how EBS-Inspector can be customized to your exact requirements.

Call us at (905) 469-1379, or Email [info@eBusiness-Solutions.ca](mailto:info@eBusiness-Solutions.ca)

If you have a sample report available, please send.